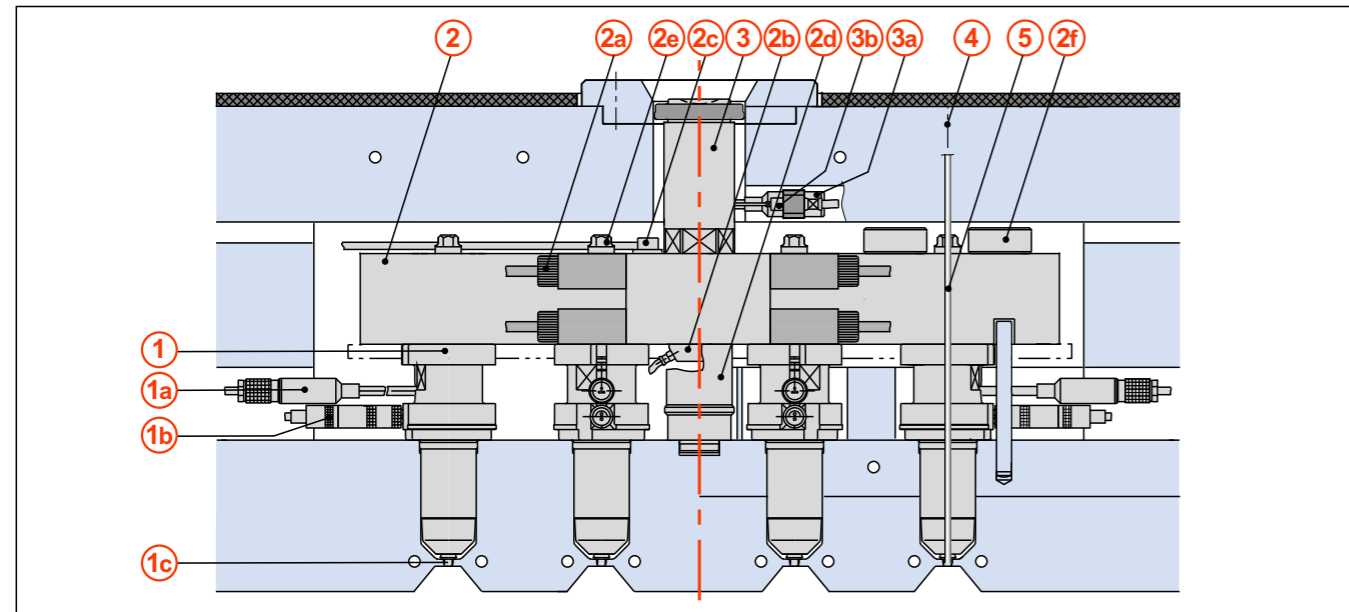


Assembly with support rail/.....frame plate



Signs and symbols:

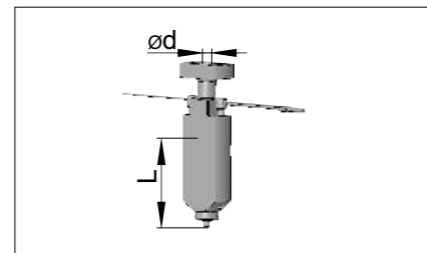
- ① Valve-gate nozzle, chapter 2.3
- ①a Power receptacle, chapter 6
- ①b Thermoplug, chapter 6
- ①c PM needle guide, chapter 7
- ② Manifold, chapter 3
- ②a Power receptacle, chapter 6
- ②b Surface mounted thermocouple/ thermocouple, chapter 6
- ②c PE ground cable, chapter 6
- ②d Support piece, chapter 7
- ②e BG seal, chapter 7
- ②f Pressure pad
- ③ Connecting nozzle, chapter 5
- ③a Power receptacle, chapter 6
- ③b Fixed thermocouple connection
- ④ Needle actuation, chapter 4
- ⑤ Valve needle, chapter 7

① Valve-gate nozzle

NFT for limited tool space, screwed to the manifold

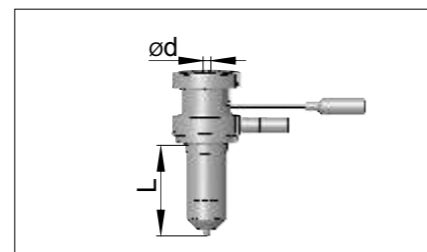
Please indicate the nozzle length in your order.
Example:
5NFT90

Order code	Nozzle ød	Nozzle length L (mm)
4NFT__	3.8	60, 90, 110
5NFT__	4.8	60, 90, 110
6NFT__	6.0	60, 90, 110



NHT screwed to the manifold, with shaft

Order code	Nozzle ød	Nozzle length L (mm)
4NHT__	3.8	40 ... 100
5NHT__	4.8	40 ... 150
6NHT__	6.0	40 ... 250
8NHT__	7.5	60 ... 250
10NHT__	10.0	60 ... 250

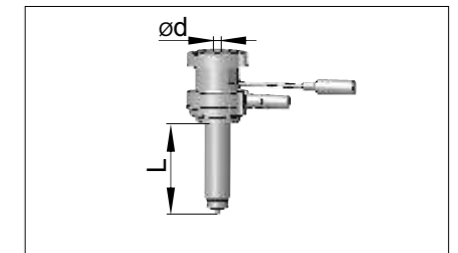


① Valve-gate nozzle

NLT for limited tool space, screwed to the manifold, without shaft

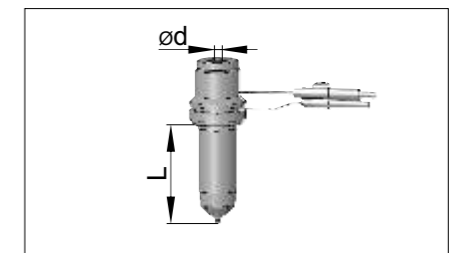
Please indicate the nozzle length in your order.
Example:
5NLT100

Order code	Nozzle ød	Nozzle length L (mm)
4NLT__	3.8	40 ... 100
5NLT__	4.8	40 ... 150
6NLT__	6.0	40 ... 200
8NLT__	7.5	80 ... 250
10NLT__	10.0	60 ... 250
12NLT__	12.0	60 ... 250



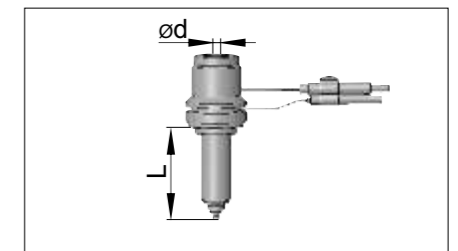
NMT for limited tool space, not screwed to the manifold, with shaft

Order code	Nozzle ød	Nozzle length L (mm)
4NMT__	3.8	40 ... 100
5NMT__	4.8	40 ... 150
6NMT__	6.0	40 ... 200
8NMT__	7.5	50 ... 350
10NMT__	10.0	60 ... 350
12NMT__	12.0	60 ... 350



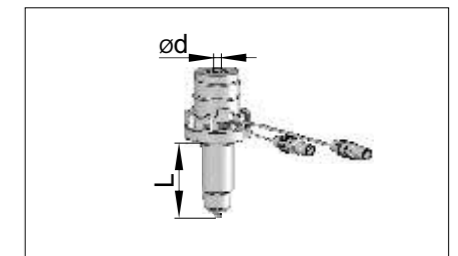
NNT for limited tool space, not screwed to the manifold, without shaft

Order code	Nozzle ød	Nozzle length L (mm)
4NNT__	3.8	50 ... 100
5NNT__	4.8	50 ... 100
6NNT__	6.0	50 ... 100



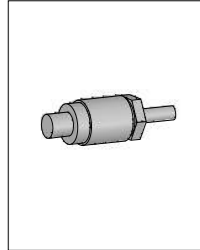
NTT screwed to the parting line, with shaft

Order code	Nozzle ød	Nozzle length L (mm)
4NTT__	3.8	50 ... 120
5NTT__	4.8	50 ... 120
6NTT__	6.0	50 ... 120
8NTT__	7.5	50 ... 350
10NTT__	10.0	60 ... 350
12NTT__	12.0	60 ... 350



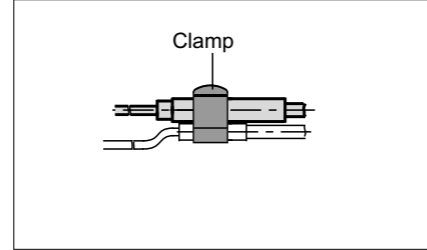


1a) CMT Power receptacle Nozzle type NHT, NLT
FKT Power receptacle Nozzle type 4-6NTT

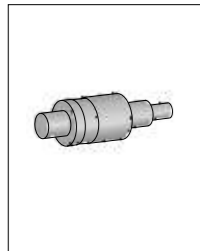


Order code		Cable length (m)
CMT50	FKT50	0.5
CMT100	FKT100	1.0
CMT150	FKT150	1.5
CMT200	FKT200	2.0
CMT250	FKT250	2.5

Fixed power connection
Nozzle type NFT, NMT, NNT, 8-12NTT

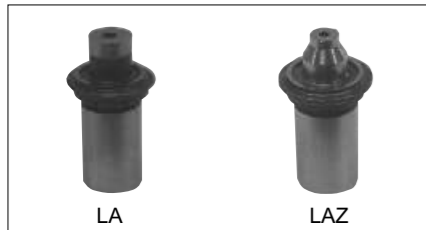
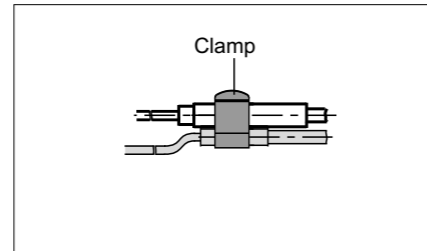


1b) CMLK Thermo plug
Nozzle type NHT, NLT, 4-6NTT



Order code	Cable length (m)
CMLK50	0.5
CMLK100	1.0
CMLK150	1.5
CMLK200	2.0
CMLK250	2.5

Fixed thermo connection
Nozzle type NFT, NMT, NNT, 8-12NTT

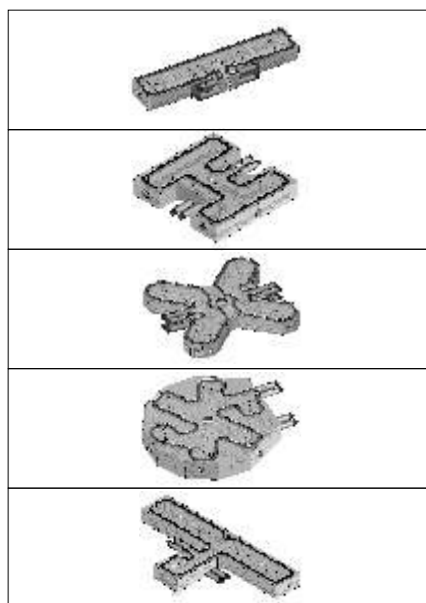


1c) PM Needle guide

Design	Gate Ø										
	0.8	1.0	1.2	1.4	1.6	2.0	2.5	3.0	3.5	4.0	
LA	•	•	•	•	•	•	•	•	•	•	•
LAZ	•	•	•	•	•	•	•	•	•	•	•



2) System components of a hot runner system

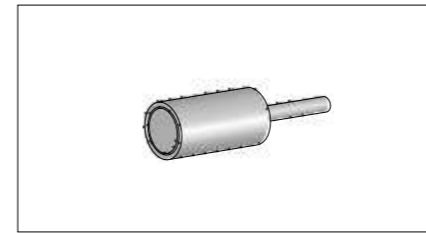


Dimension	
NGCP ... NGDP ...	Straight manifold
NHCP ... NHDP ... NHEP ...	H-manifold
NKCP ... NKDP ... NKEP ...	Cross-manifold
NSCP ... NSDP ... NSEP ...	Star-manifold
NTCP ... NTDP ... NTEP ...	T-manifold

Order code, size, dimension and balance chapter 3.

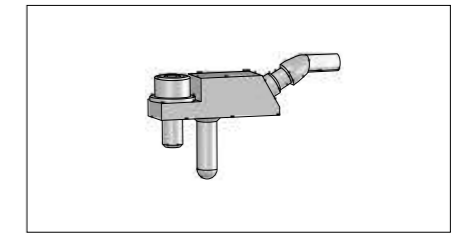


2a) CFTV Power receptacle



Order code	Cable length (m)
CFTV100H	1.0
CFTV150H	1.5
CFTV200H	2.0
CFTV250H	2.5

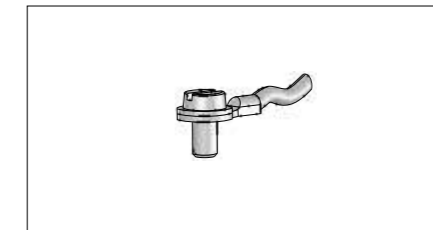
2b) 151HF Surface mounted thermocouple
1.0 m cable and screw included



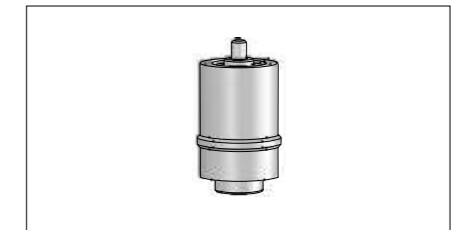
2b) 158..... Thermocouple
1.0 m cable and screw included



2c) PE Ground cable 110.230
1.0 m cable and screw included



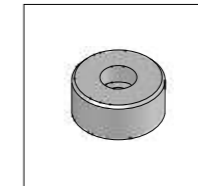
2d) Support piece 117.786
Included in the delivery of the manifold (screw also included)



2e) Sealing assembly in the manifold



Order code	Needle Ø mm
752.315	2
752.316	3
752.801	5

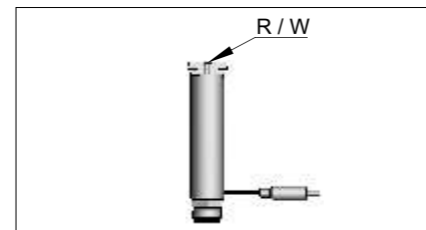


2f) Support piece screw included

Order code	
817.233	for limited tool space
817.250	



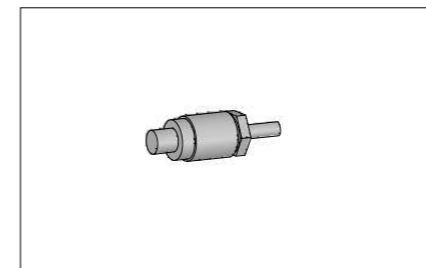
3) AKD/ ASD Connecting nozzle



Order code	Radius/angle	Type
___/G___	Straight	AKD3, AKD4, AKD5, AKD6, AKD8, ASD10, ASD12, ASD14, ASD16
___/R___	R8 ... 40	
___/W___	W90° ... 140°	

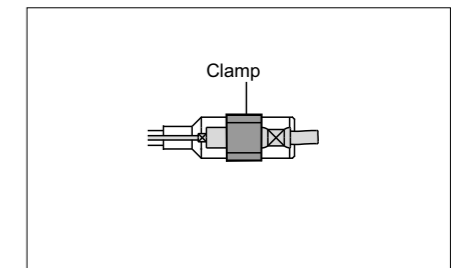


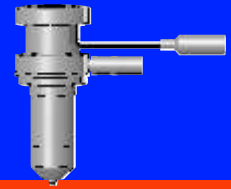
3a) CMT Power receptacle
Connecting nozzle AKD, ASD



Order code	Cable length (m)
CMT50	0.5
CMT100	1.0
CMT150	1.5
CMT200	2.0
CMT250	2.5

3b) Fixed thermocouple
for connecting nozzle AKD, ASD





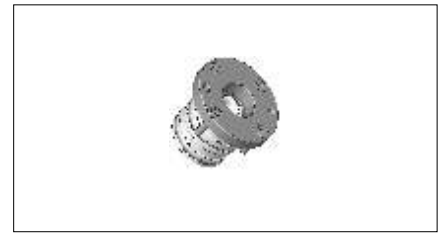
④ ME 10/UV75 Electromagnet

Order code	Valve needle NEP Needle-Ø (mm)	Actuation
ME 10/UV75	2/ 3	Electrical



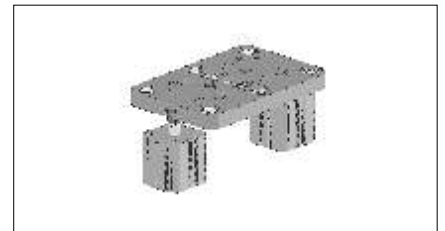
④ ENV Single needle valve

Order code	Needle-Ø (mm)	Actuation medium		Assembly	
		Pneumatic	Hydraulic	without housing	with housing
ENV2/10/L	2	•		•	
ENV2/10/L/G	2	•			•
ENV2/10/O	2		•	•	
ENV2/10/O/G	2		•		•
ENV3/10/L	3	•		•	
ENV3/10/L/G	3	•			•
ENV3/10/O	3		•	•	
ENV3/10/O/G	3		•		•
ENV5/12/L	5	•		•	
ENV5/10/L/G	5	•			•
ENV5/10/O	5		•	•	
ENV5/10/O/G	5		•		•



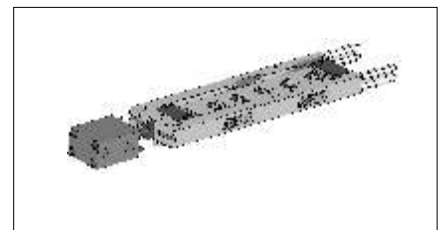
④ ANEH Lifting plate mechanism

Order code	Needle-Ø (mm)	Actuation medium
ANEH/L	2/ 3/ 5	Pneumatic
ANEH/O	2/ 3/ 5	Hydraulic



④ ANES Sliding cam mechanism

Order code	Needle-Ø (mm)	Actuation medium
ANES/L	2/ 3/ 5	Pneumatic
ANES/O	2/ 3/ 5	Hydraulic



HK-S-I

NEST

HK-S-II

NFT

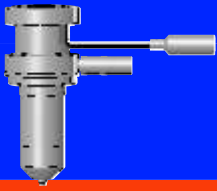
NHT

NLT

NMT

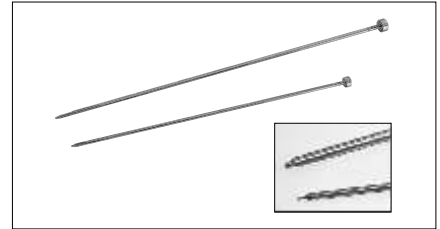
NNT

NTT



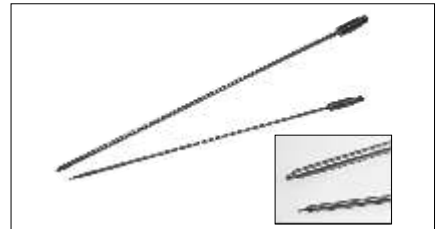
5 NEP Valve needle
for needle actuation with ME 10/UV75 electromagnet

Needle-Ø mm	Gate diameter Ø mm									Material-tube Ø mm nozzle
	0.8	1.0	1.2	1.4	1.6	2.0	2.5	3.0	4.0	
2	•	•	•	•	•					4 - 6
3						•	•			8



5 NHP Valve needle
for needle actuation with ENV single needle valve, ANEH lifting plate mechanism and ANES sliding cam mechanism

Needle-Ø mm	Gate diameter Ø mm									Material-tube Ø mm nozzle
	0.8	1.0	1.2	1.4	1.6	2.0	2.5	3.0	4.0	
2	•	•	•	•	•					4 - 6
3						•	•			8
5								•	•	10, 12



HK-S I

NEST

HK-S II

NFT

NHT

NLT

NMT

NNT

NTT